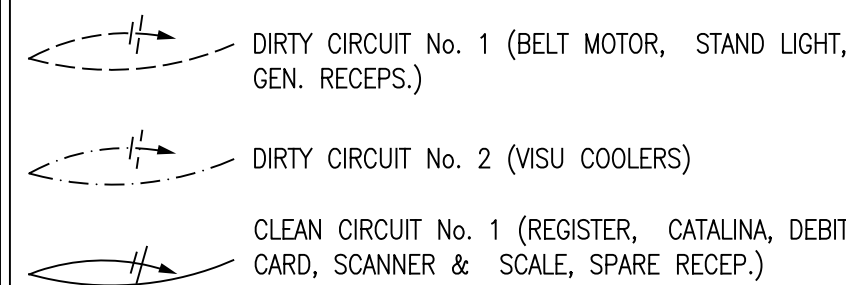


## CHECKOUT INSTALLATION NOTES

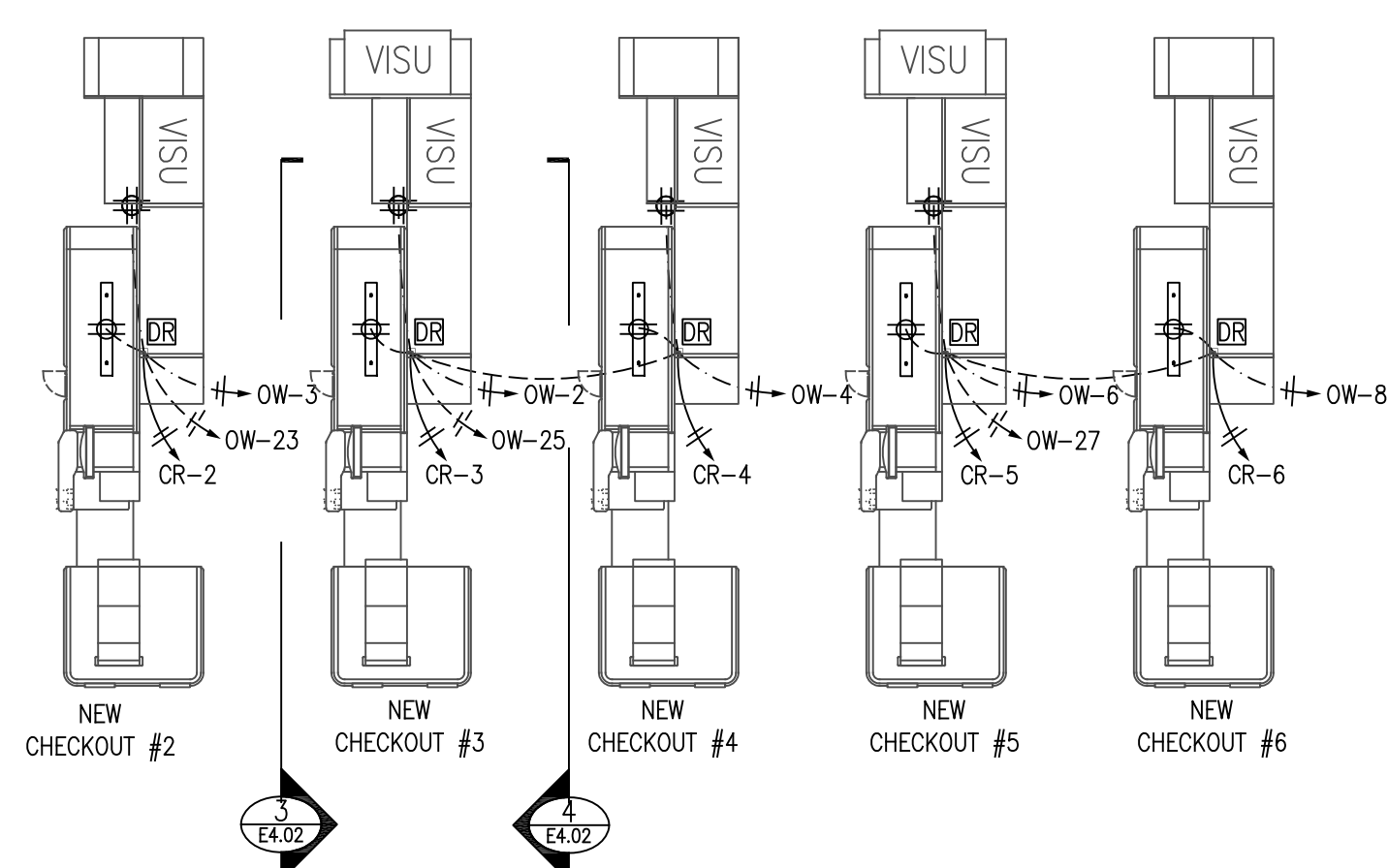
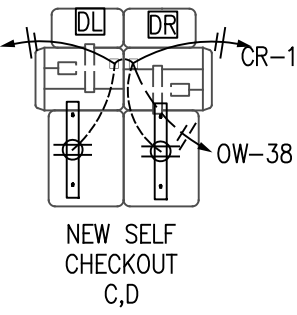
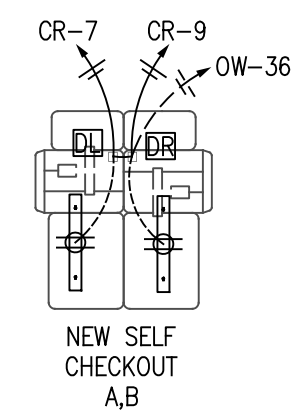
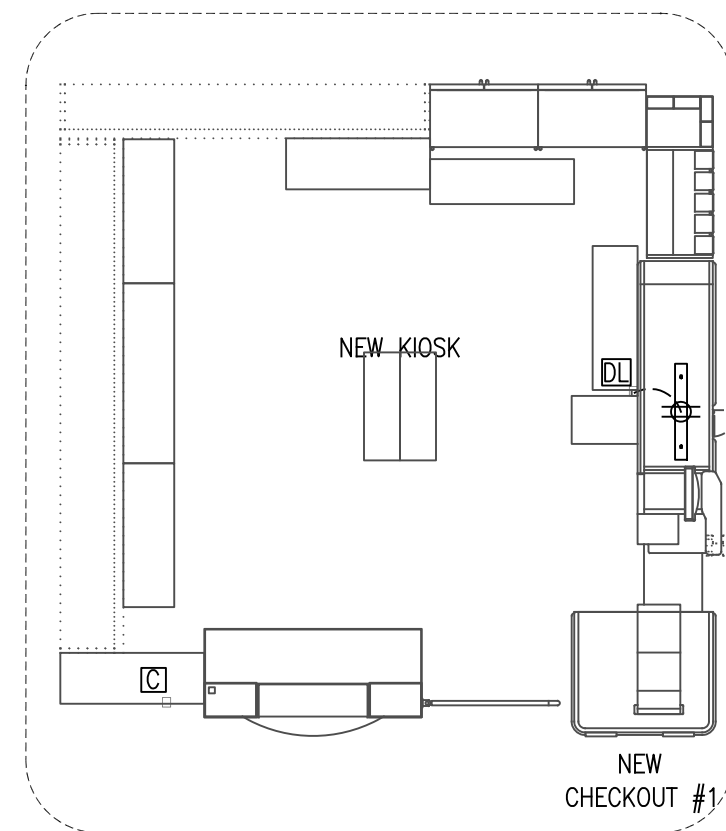
1. SEE SHEET E4.03 FOR WORKROOM, CUSTOMER SERVICE AND CHECKOUT COMMUNICATION WIRING.
2. MOUNT QUAD OUTLET FLUSH IN THE CHECKOUT STAND FOR THE VISU COOLER(S) AND LED CANDY RACK LIGHTING AT THIS LOCATION. RECEPTACLE TO BE MOUNTED 1'-4" A.F.F. IN THE SIDE NEAREST THE CASHIER AND ACCESSIBLE TO THE VISU COOLER CONNECTION. FACE PLATE TO BE PAINTED TO MATCH CHECKOUT STAND COLOR. COORDINATE LOCATION WITH PRE-WIRED CONTROLS MOUNTED INSIDE THE CHECKOUT.
3. CASH REGISTER CIRCUITS SHALL BE PROVIDED WITH DEDICATED NEUTRAL AND GREEN ISOLATED GROUND.
4. BX CABLES SHALL BE INSTALLED WITH INSULATED THROATS AND APPROVED CONNECTORS.
5. ELECTRICAL CONTRACTOR SHALL LEAVE A PULL STRING IN CEILING J-BOX AT COMMUNICATIONS SECTION OF "TELE-POWER" POLE FROM THE COMMUNICATION JUNCTION BOX TO EACH CHECKOUT FOR USE BY OTHERS.
6. ELECTRICAL CONTRACTOR SHALL COORDINATE TELEPOLE LOCATIONS WITH LIGHTING & HVAC PRIOR TO INSTALLATION TO MINIMIZE INSTALLATION CONFLICTS.

## CHECKOUT WIRING LEGEND

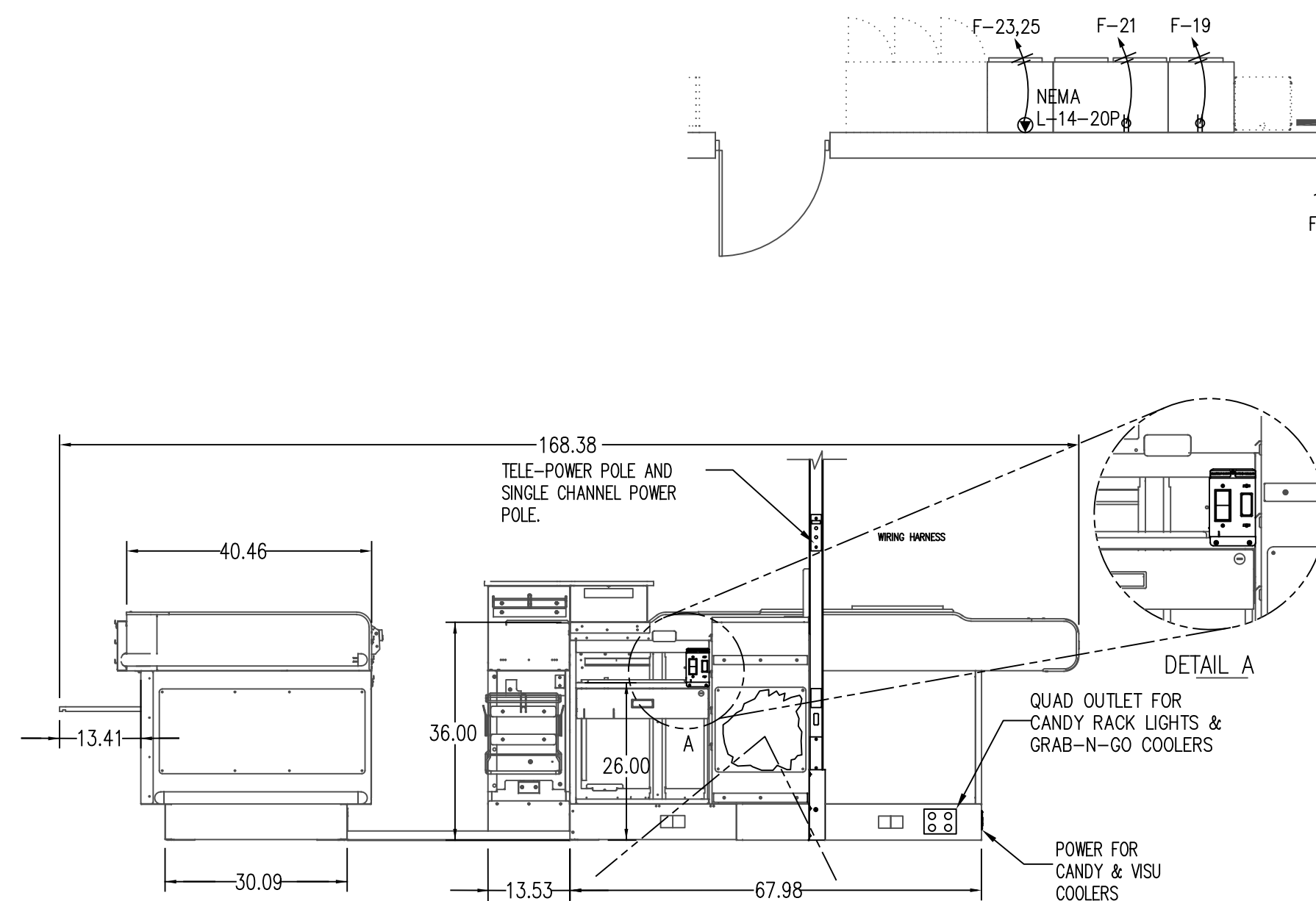


## ELECTRICAL WIRING KEY NOTES

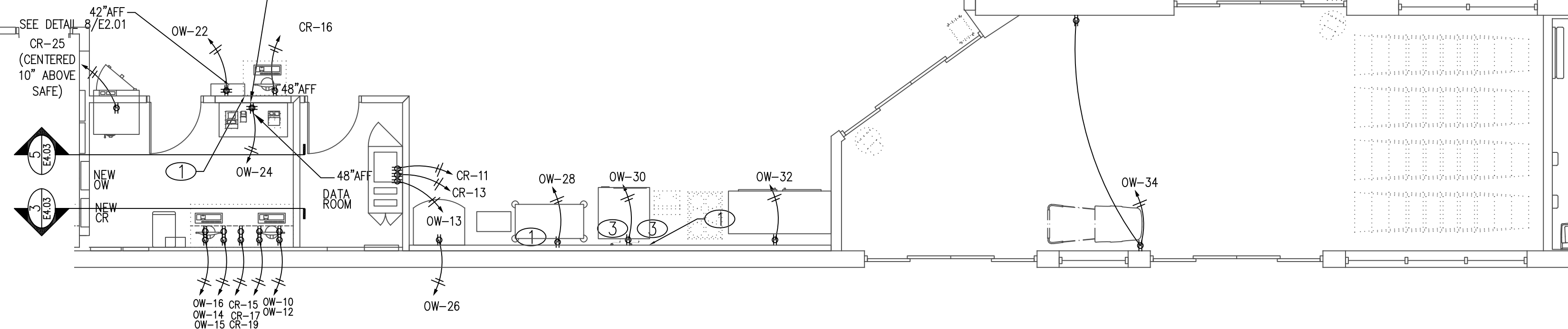
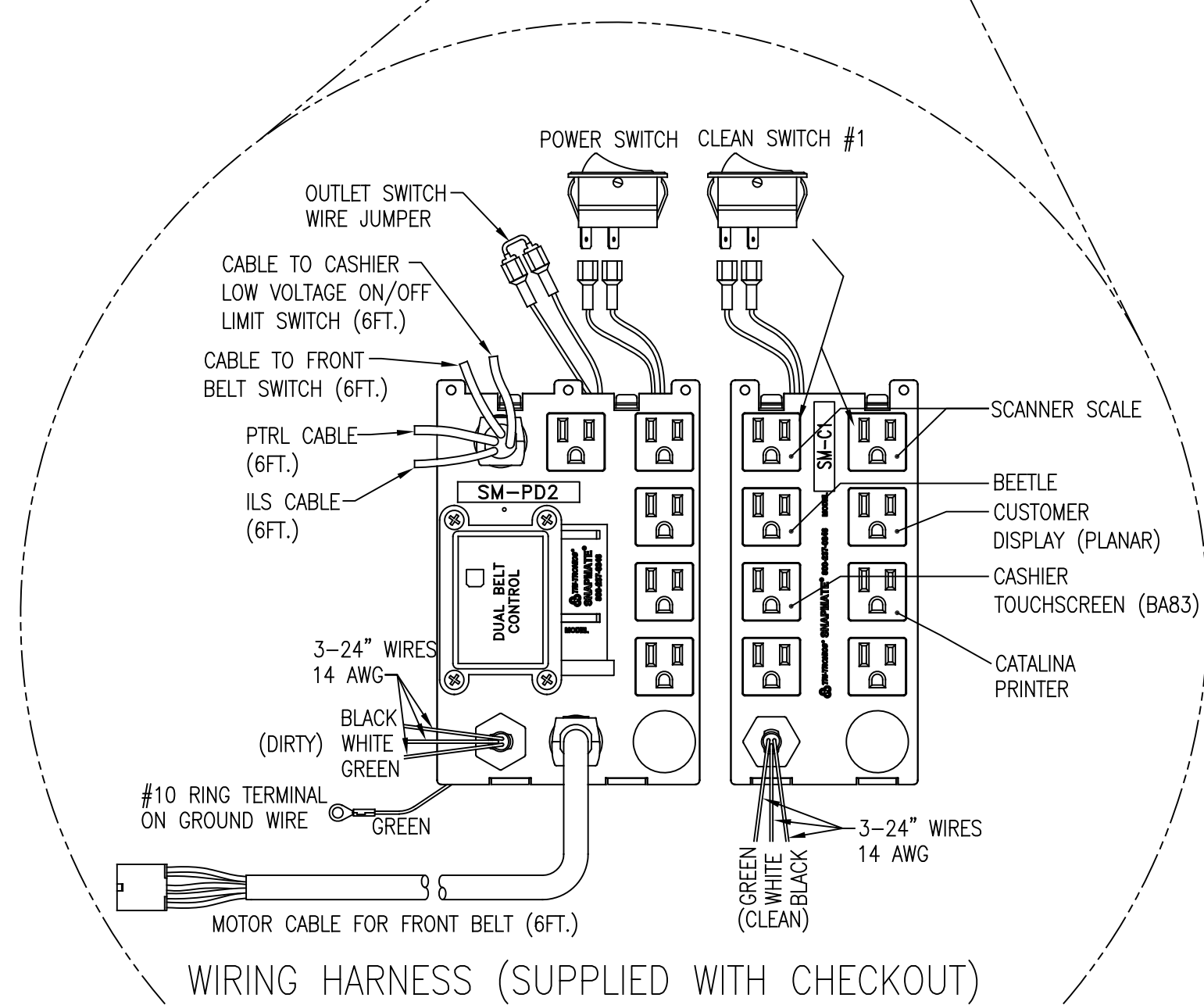
1. CONDUITS ON THIS WALL TO BE RECESSED WHERE POSSIBLE



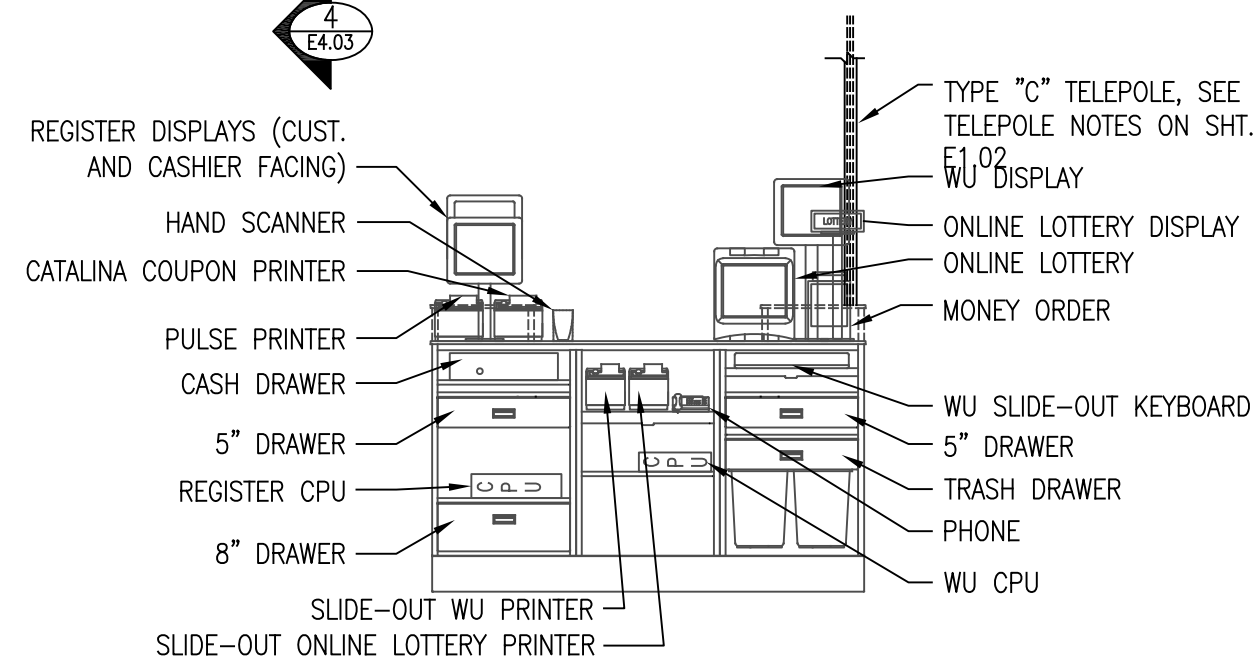
ALL POWER OUTLETS AND JUNCTION BOXES BEHIND NEW CABINET SHALL BE RELOCATED UP TO 48" AFF (ELECTRICAL CONTRACTOR SHALL ADD A RECEPTACLE AT 48" AFF IF ONE NOT ALREADY PRESENT). FIELD VERIFY EXACT AMOUNT OF WORK REQUIRED. COORDINATE WITH DELHAIZE CONSTRUCTION SUPERVISOR



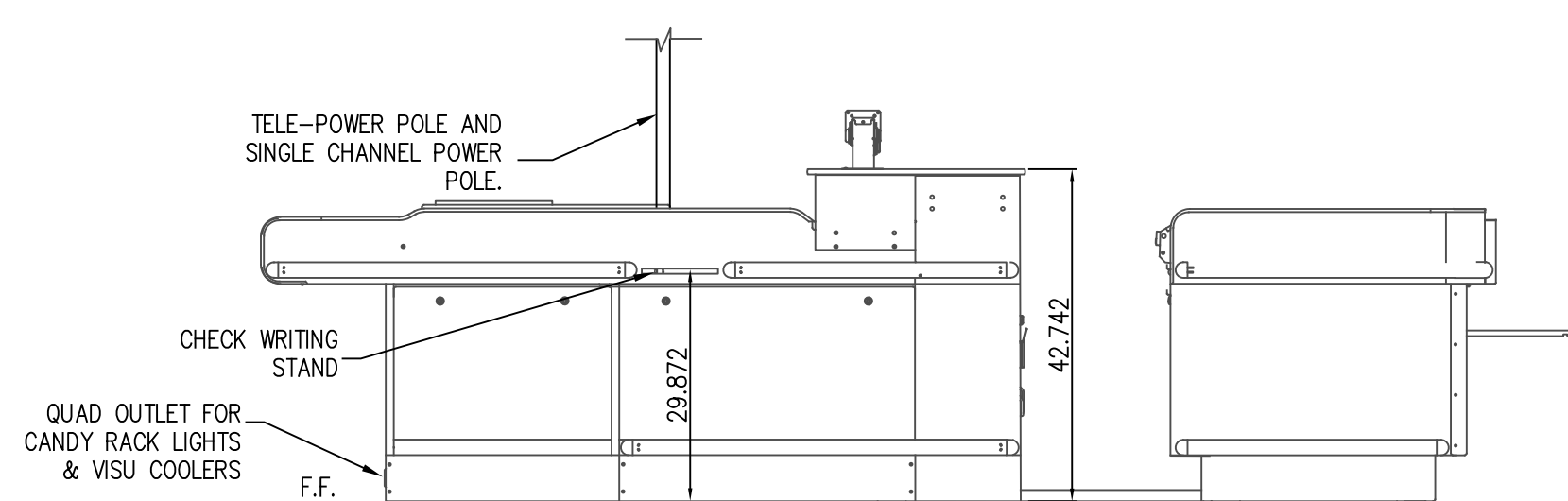
4 ASSOCIATE SIDE ELECTRICAL ELEVATION  
E4.02 SCALE : NONE



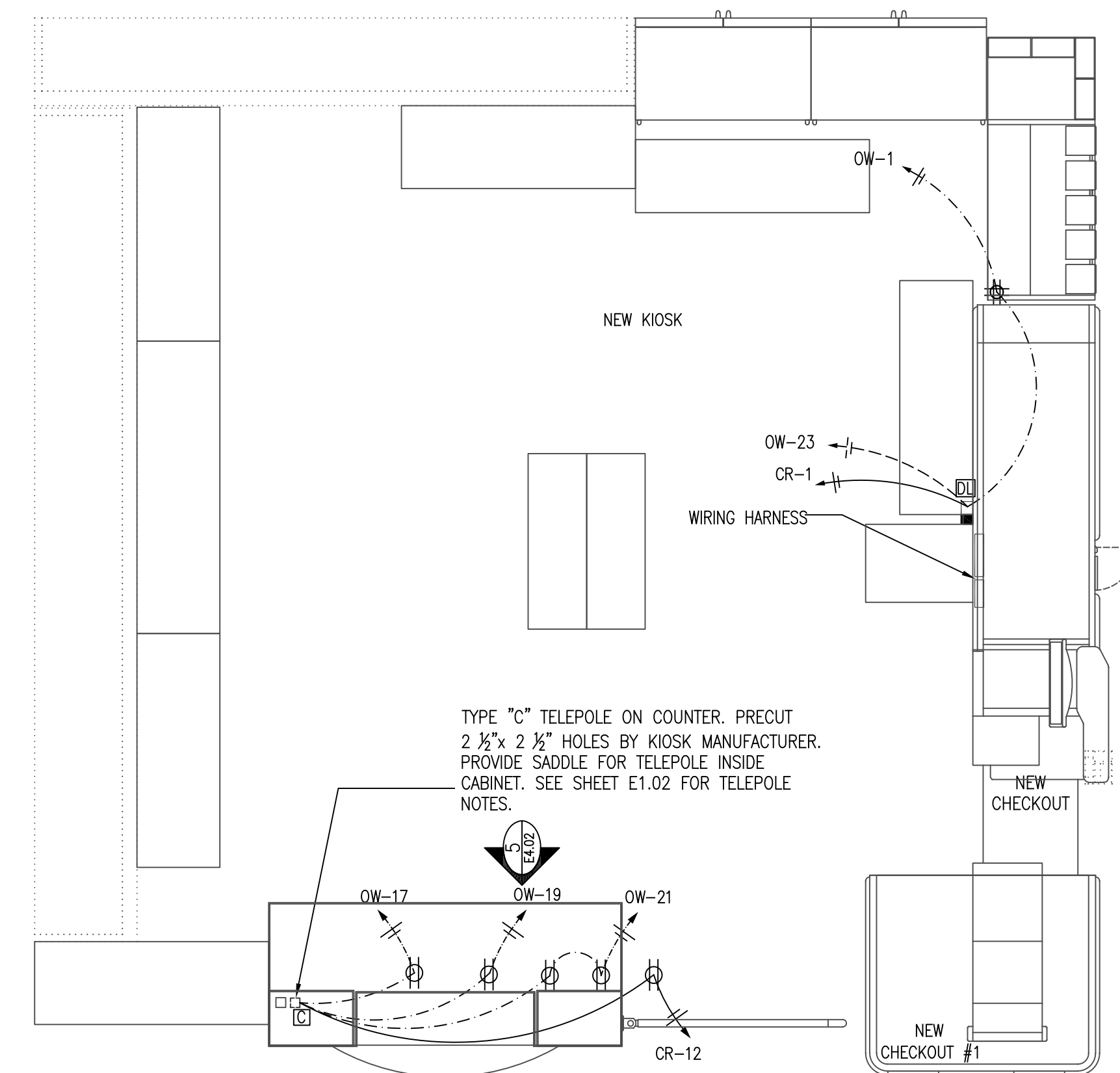
1 ENLARGED ELECTRICAL POWER PLAN  
E4.02 SCALE : 3/16" = 1'-0"



5 CUSTOMER SERVICE KIOSK ELECTRICAL ELEVATION  
E4.02 SCALE : NONE



3 CUSTOMER SIDE ELECTRICAL ELEVATION  
E4.02 SCALE : NONE



2 CUSTOMER SERVICE KIOSK ELECTRICAL PLAN  
E4.02 SCALE : 1/2" = 1'-0"